



# GENESEE COUNTY

## Department of Planning

"Planning for the future of Western New York's Heartland"

# PLANNING

# NEWS

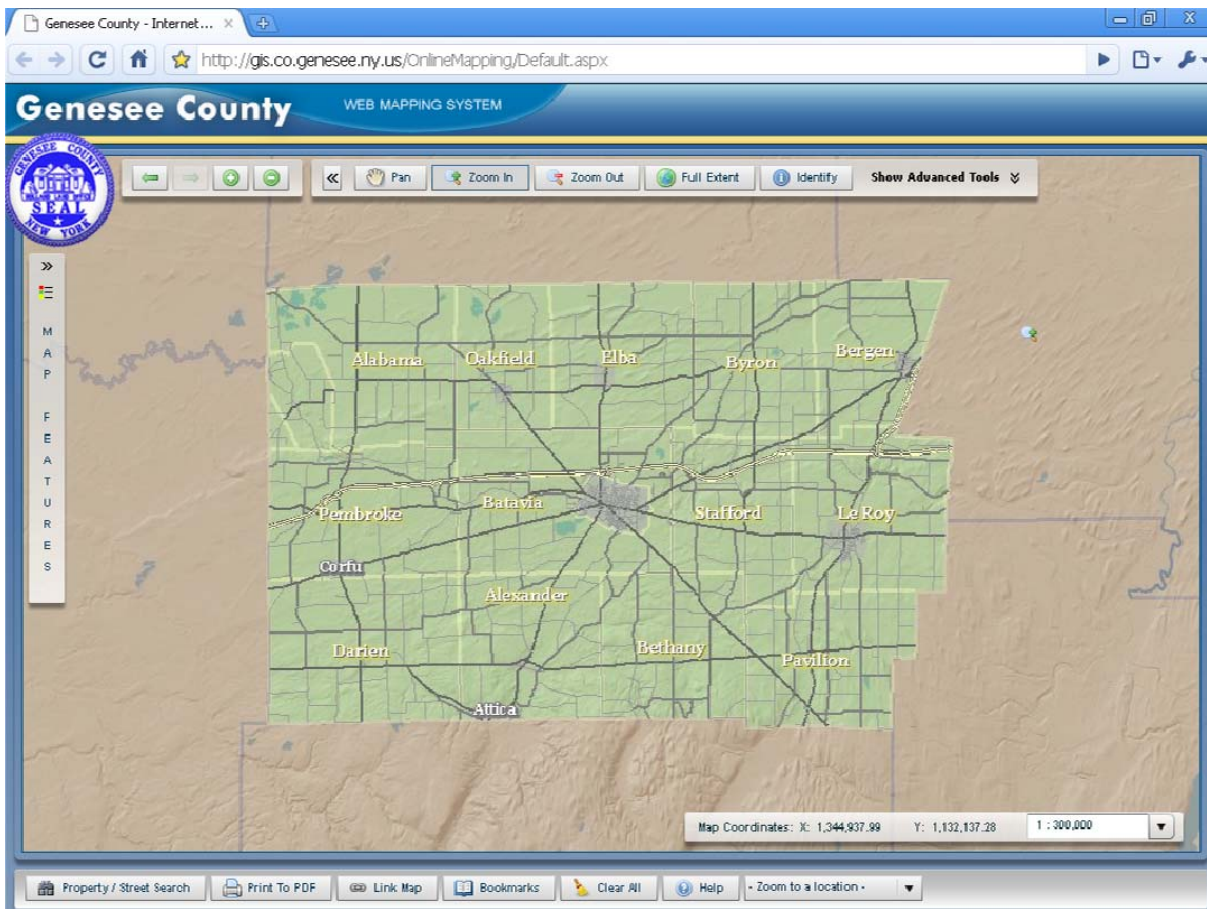
Volume 80

Summer 2010

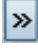


## Genesee County WEB MAPPING SYSTEM

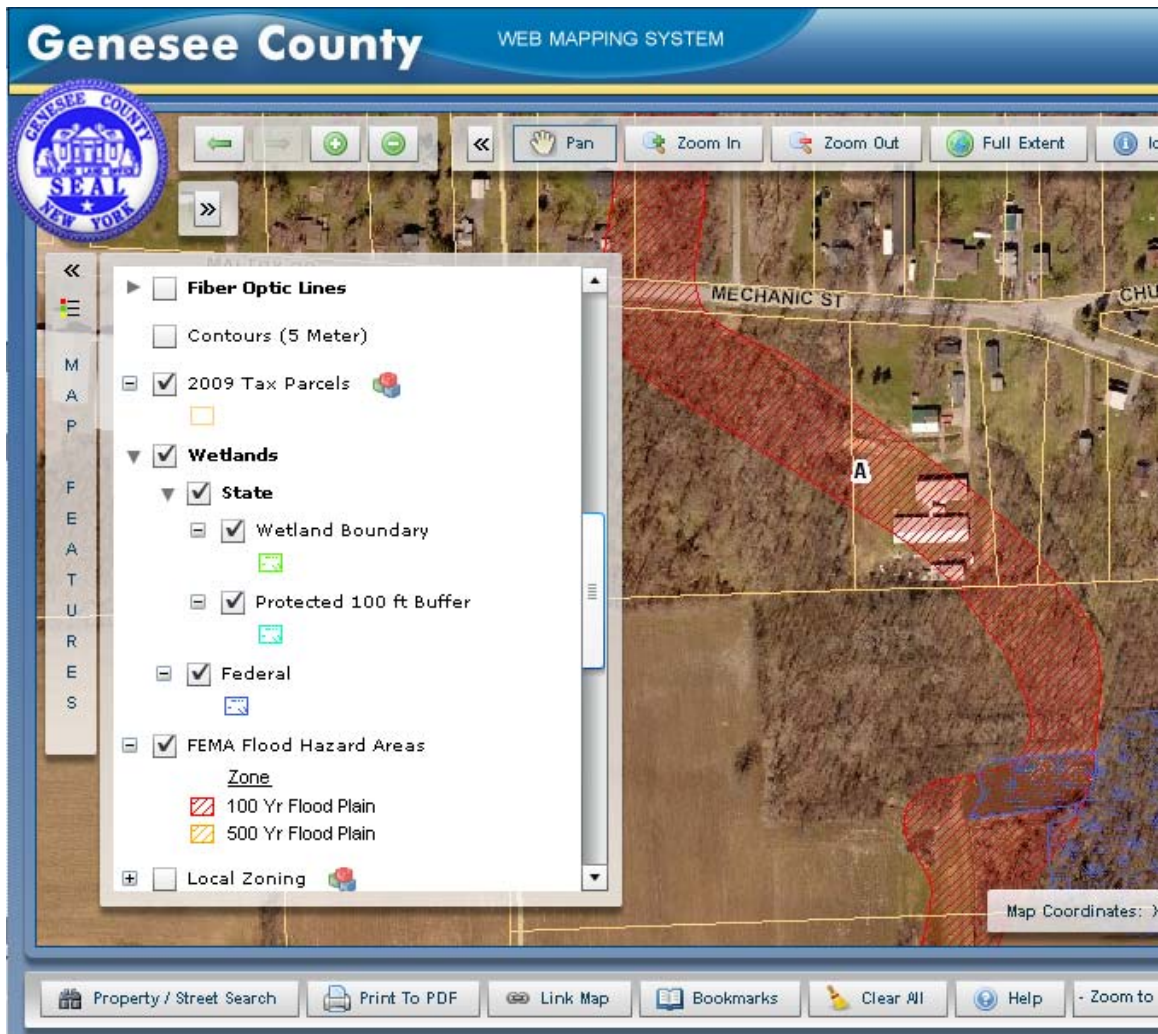
Genesee County has made public a new interactive map service built on the latest technology. This application has been compiled using the input from multiple County Departments. Similar to the previous system, it provides an easy method of accessing the County's land and property data through a web based internet mapping application. View your property in relation to Zoning, School Districts, Municipal Boundaries, Flood Zones, and Wetlands, just to name a few. Beyond the viewing of data, users now have access to enhanced functionality which includes a Pictometry image (oblique angle aerial photography) viewer, a custom parcel report feature that can create a report based on a particular property, and a feature that lets the user create a custom digital map for printing and emailing.


The internet mapping system can be found by going to the County website, [www.co.genesee.ny.us](http://www.co.genesee.ny.us) and clicking on the Genesee County Maps link under the Quick Links header, or you can go directly to [www.co.genesee.ny.us/dpt/gis/](http://www.co.genesee.ny.us/dpt/gis/). After accepting the disclaimer (click OK at the bottom), you will enter the site as shown below.



If you are familiar with the old system, one of the first new things you will notice is that the map occupies a larger portion of the screen. This is possible because the tool bars and the map legend (labeled Map Features) have a hide

feature. By simply clicking on the  button the user can hide unneeded complexity and screen clutter. As before, many of the layers are scale dependent, in other words they become visible as the user zooms in. One such layer is the parcels, it becomes visible as the user zooms in to 1 : 5,000 scale. The legend is also simplified by hiding unwanted detail away. Layers are grouped, and symbology hidden by default. To reveal groups, simply click on the  button and to view layer symbology click on the  button. See the example screenshot below.



For additional information on how to use the application, there is a very useful document that can be accessed by clicking on the  button on the lower toolbar at the bottom of the screen. We hope that everyone finds the application useful, and we welcome comments and suggestions to improve the application.

# You're Invited!

The Genesee County Planning Board cordially invites members of local municipal planning boards and zoning boards of appeals to attend one of their monthly meetings. Attendance at a meeting will allow board members to see how the County Planning Board functions and possibly earn training credit (if municipal approval is granted). A set amount of time will be available for a question and answer session. If your municipality is interested in attending a County Planning Board meeting, please contact Jill Babinski at 344-2580 extension 5471 or [jbabinski@co.genesee.ny.us](mailto:jbabinski@co.genesee.ny.us).

# Smart Growth Plan Review

On May 9<sup>th</sup>, 2001 the Genesee County Legislature adopted the Smart Growth Plan. The Plan is a mitigating action of potential significant environmental impacts of the Genesee County Water Supply Project upon the viability of agriculture in Genesee County. Smart Growth Development Areas throughout the county were designated based on their access to transportation, minimal conflict with County agricultural Districts and State regulated wetlands, feasibility of extending public water service, and the potential for extending public infrastructure to support development.

The Smart Growth Plan maps and recommendations have been reviewed every two years since the plan's adoption in 2001, but as a result of the 2005 review, the County Legislature extended the review of the Plan from every two years to every three years. Therefore, after the 2007 review there is now three years in between reviews.

The review process incorporates input from municipalities, the County Planning Board, the Water Resources Agency, and the Agricultural and Farmland Protection Board, as well as other interested organizations and citizens.

Four municipalities proposed expansion of their Smart Growth Development Areas. The Towns of Alabama, Batavia, Darien and Oakfield submitted maps and narratives for review by the Planning Department. The Planning Department, in response, has compiled these requests, along with the Planning Department recommended changes into the Preliminary Draft. This document, currently available on the County website at <http://www.co.genesee.ny.us/dpt/planning/SmartGrowthPlan%202010Prelim.pdf>, serves as the first draft of the Smart Growth Plan. Citizens are encouraged to review the plan. Written comments will be accepted and can be sent directly to the Planning Department.

## *Genesee County Comprehensive Plan*

Have you been to a County Comprehensive Plan Steering Committee Meeting? At each meeting, two of the ten focus groups will review their monitoring reports for the Committee, seeking comments and suggestions on items to concentrate on for the future. All are invited to attend. Meetings are held at 9:30 a.m. (please call to verify the location). If you are unable to attend the meetings, but would like to review the focus group monitoring reports, please visit the County website at <http://www.co.genesee.ny.us/dpt/planning/compplan.html>. If you are interested in serving on one of the focus groups, please contact the Planning Department at 344-2580 ext. 5467.

## Land Separations and Subdivisions in Genesee County

Has your Planning Board recently approved a land separation? Did they follow the County Office of Real Property checklist before approving the land separation? Prior to approval, it is very important that each item on the checklist be addressed. The items are as follows:

1. Compare the Land Separation Map with the Tax Map to ensure that everyone is aware of: 1) the location, size and shape of the parcel(s) as currently portrayed in the Tax Map and 2) how approval of the Land Separation Map will change the parcel(s).
2. Are all the parcels on the Land Separation Map owned by the same person or company?

3. Is the current owner's name on the title of the Land Separation Map?
4. If the tax map numbers are noted on the Land Separation Map, are they the same numbers as on the Tax Map?
5. Are the names of roads on the Land Separation Map accurate?
6. If the parcel(s) are being separated off, is (are) to be merged with another person's existing and contiguous parcel, has this information and the procedure for accomplishing this been given to the pertinent individuals? If the process of separating off the parcel(s) created a remainder parcel that should be merged with another contiguous parcel has the information and the procedure for accomplishing this been given to the pertinent individuals?
7. Is the parcel being created large enough so that it requires a map to be filed as per the Town's Land Separation Local Law currently in effect? Could the separation of the parcel be accomplished by just filing a deed with the description of the new parcel instead of additionally requiring a Land Separation Map be filed?
8. Is the map being presented actually a Land Separation Map or is it a survey map (perhaps labeled as a Land Separation Map) that does not create a new parcel? If it is not a new parcel, there probably is not a need for the map to be filed in the County Clerk's Office.
9. Are contingencies stated on the Land Separation Map? All contingencies should be satisfied before the map is submitted for approval. No contingencies should be stated on the Land Separation Map.
10. Does the map to be filed accurately depict what the Board approved as stated in the minutes of the Planning Board?

After the above steps are completed, the checklist for filing land separations and subdivisions should be followed. Below is the procedure outlined by the Genesee County Office of Real Property. If you have any questions, please feel free to call the Office of Real Property at 344-2550 ext. 2218.

1. Land separations and subdivisions must first be approved by the local planning board.
2. A map on Mylar must then be filed. The map must have a proper title (land separation or subdivisions), have a signed surveyor's certification, be signed by the chairperson of the local Planning Board or another authorized local representative, be signed by the County Health Department and also be signed by a staff member of the County Office of Real Property.
3. A tax search certificate from the County or City Treasurer's Office, depending on where the property is located, must also be presented.
4. A fee will be based on the following: if the map is for more than one lot, a fee is collected based on the number of lots on the map (see fee schedule), ten dollars is charged for each tax search certificate for each parcel entry on the tax roll and a filing fee of ten dollars per filed map is collected by the County Clerk at the time of filing.

## Grants Update!

The Genesee County Health Department, awarded a Greater Rochester Health Foundation grant, continues to work diligently on creation of a GIS (Geographic Information System) to store information regarding septic systems and wells. This joint project, between the Genesee County Health Department and the Orleans County Health Department, is making great progress. Final equipment purchases of laptops and GPS units will be done shortly. The web based application, developed by Bergmann Associates, is on target to be ready for field trial in the near future. Scanning of historical documents is ongoing.

# Available Training

As we prepare our schedule for training opportunities, we want to hear what you are interested in. Do you want to attend a Planned Unit Development training session or would you rather learn what your role and duty is as a planning or zoning board member? These are just some examples of training that can be conducted. Please contact Jill Babinski at either 344-2580 ext. 5471 or [jbabinski@co.genesee.ny.us](mailto:jbabinski@co.genesee.ny.us) to let her know what training you think is necessary.

## Census Spotlight



2010 CENSUS: IT'S IN OUR HANDS

Below are the most recent participation rates as of April 27, 2010. These rates displayed are prior to the cut-off for door-to-door non response follow-up operations. Please visit [www.2010census.gov](http://www.2010census.gov) for more information.

### 2010 Census Participation Rates

Municipality	Subdivision	Participation Rate
Genesee County		80%
New York State		67%
USA		72%
Alabama		84%
Alexander		82%
	<i>Village of Alexander</i>	81%
	<i>Village of Attica</i>	78%
Batavia (city)		74%
	<i>Ward 1</i>	81%
	<i>Ward 2</i>	73%
	<i>Ward 3</i>	73%
	<i>Ward 4</i>	79%
	<i>Ward 5</i>	66%
	<i>Ward 6</i>	73%
Batavia (town)		82%
Bergen		87%
	<i>Village of Bergen</i>	87%
Bethany		87%
Byron		85%
Darien		84%
Elba		83%
	<i>Village of Elba</i>	82%
LeRoy		80%
	<i>Village of LeRoy</i>	78%
Oakfield		82%
	<i>Village of Oakfield</i>	81%
Pavilion		89%
Pembroke		84%
	<i>Village of Corfu</i>	83%
Stafford		82%
Tonawanda Reservation		86%

# Genesee County Address Point Layer

Genesee County has created a database to locate addresses with Global Position System (GPS) coordinates for use by Public Safety and Public Service Agencies throughout Genesee County. The primary purpose for this information is to provide Genesee County Dispatchers the most accurate location information for callers. This is a multi-phase process and Genesee County invites other municipalities to participate.

For all new builds, subdivisions, and other projects where an address may be assigned or reassigned, the Genesee County Sheriff's Office will provide addressing services to ensure that the address meets Enhanced 911 standards. For further information, please contact Steven C. Sharpe, the Director of Emergency Communications for the Genesee County Sheriff's Office at 345-3000 ext. 3400.

## County Planning Board Meeting Dates and Submittal Deadlines for 2010

Regular meetings begin promptly at 7:30 p.m. (doors open at 7:00 p.m.)  
in the large Meeting Room at Genesee County Building II

<b>Final Date for Zoning Referral Submittal to County Planning Department</b>	<b>Planning Board Meeting Date</b>
Thursday, July 1, 2010 – 5:00 PM	Thursday, July 8, 2010
Thursday, August 5, 2010 – 5:00 PM	Thursday, August 12, 2010
Thursday, September 2, 2010 – 5:00 PM	Thursday, September 9, 2010
Thursday, October 7, 2010 – 5:00 PM	Thursday, October 14, 2010
Thursday, November 4, 2010 – 5:00 PM	<b>Wednesday, November 10, 2010</b>
Thursday, December 2, 2010 – 5:00 PM	Thursday, December 9, 2010

**\*\*\*Please note meeting date change from Thursday, November 11 to Wednesday, November 10 due to Veterans Day. No change to deadline date.\*\*\***

# Genesee County Department of Planning

County Building No. 2  
3837 West Main Street Road  
Batavia, NY 14020-9404

GENESEE COUNTY  
PLANNING NEWS  
Volume 80  
Summer 2010



---

## Department of Planning

County Building No. 2  
3837 West Main Street Road  
Batavia, NY 14020-9404

Phone: (585) 344-2580 (extensions below)  
Fax: (585) 345-3062  
Email: [planning@co.genesee.ny.us](mailto:planning@co.genesee.ny.us)



On the web at: [www.co.genesee.ny.us/dpt/planning](http://www.co.genesee.ny.us/dpt/planning)

James Duval, Director	Ext. 5466	<a href="mailto:jduval@co.genesee.ny.us">jduval@co.genesee.ny.us</a>
Felipe Oltremari, Senior Planner	Ext. 5470	<a href="mailto:oltremari@co.genesee.ny.us">oltremari@co.genesee.ny.us</a>
Jill Babinski, Senior Planner	Ext. 5471	<a href="mailto:jbabinski@co.genesee.ny.us">jbabinski@co.genesee.ny.us</a>
Holly McAllister, Secretary	Ext. 5467	<a href="mailto:hmcallister@co.genesee.ny.us">hmcallister@co.genesee.ny.us</a>

---

## Genesee County Planning Board

Melvin Wentland, Chairperson  
Berney Staats, Vice Chairperson  
Hollis Upton, Legislator  
Robert Bennett  
Laraine Caton  
Michael Cianfrini  
Scott Waite  
Ted Hawley  
Lucine Kauffman

---

## Agriculture and Farmland Protection Board

Donn Branton, Chairperson  
Ann Lawrence, Legislator  
Steven Boldt  
Lorie Cleveland  
James Duval  
Jan Beglinger  
LuAnne McKenzie  
Brad Rogers  
Dale Stein  
Charlie Miller  
Jim Veazey